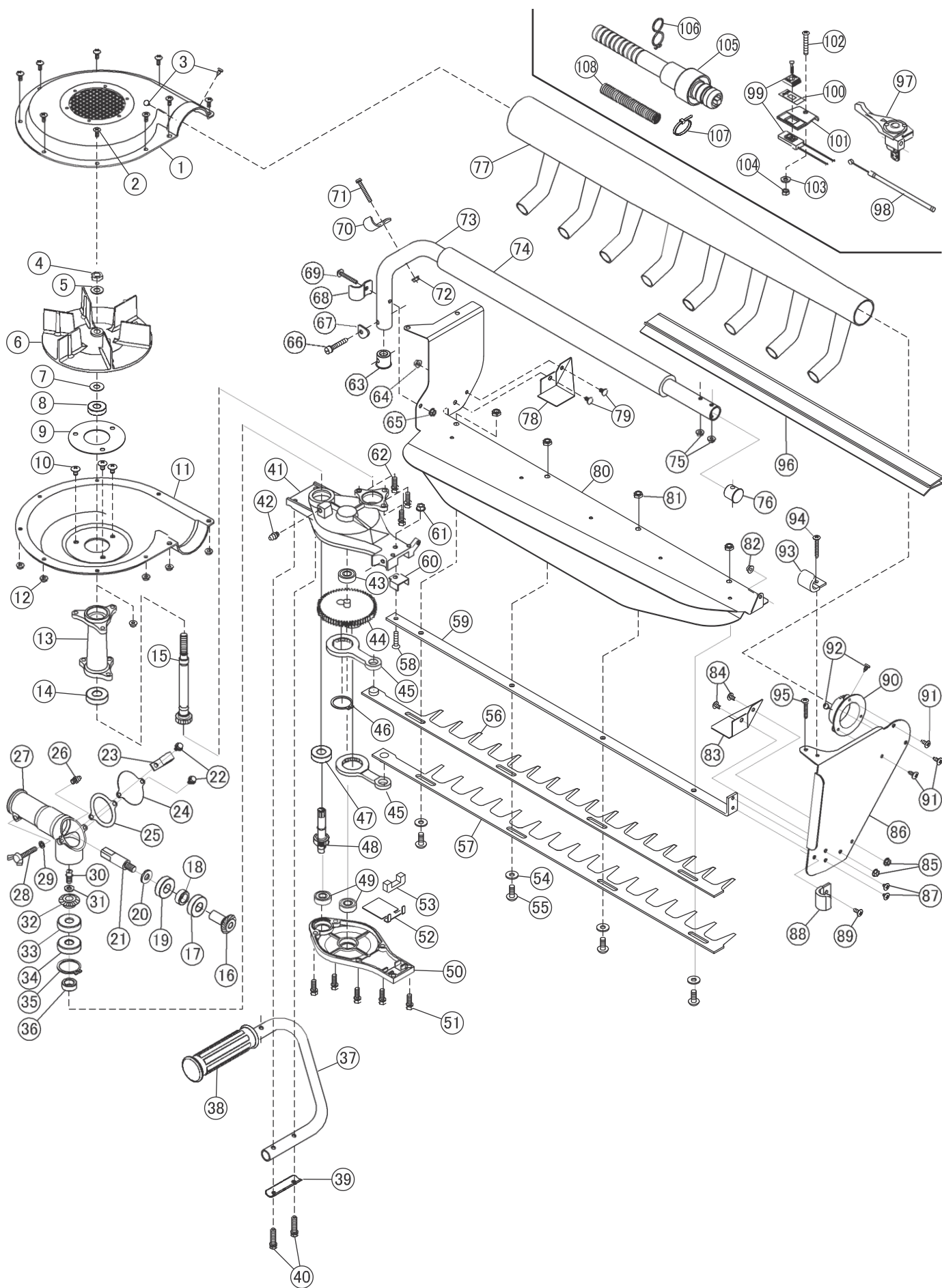


AM-110VA **Cutter Assembly**

落合刃物工業株式会社

09.03

AM-110VA 総組立



総組立

Number	Part number	Part Name	Quantity	Comment	Price
1	A259-140400	Fan Casing U bracket	1		
2	K012-040100	Truss machine screw M4x10	9		
3	K112-400800	Truss self-tapping 14 x8	2		
4	K152-08000L	Hexagon nut 3 M8	1	The left screw	
5	K225-080000	Belleville spring H 8	1		
6	HV2-A005000	Fan	1		
7	009-103	Flat washer	1		
8	K354-060000	Deep groove ball bearing UU	1		
9	HV2-A011000	Fan case flange	1		
10	K012-050080	Truss machine screw M5x8	3		
11	HV2-A012000	Under fan casing	1		
12	K171-040000	Plate washer nut M4	9		
13	HV2-A004000	Bearing case	1		
14	K354-060010	the deep groove ball bearing UU	1		
15	HV2-A006000	fan pinion	1		
16	HV2-A007000	Input gear shaft	1		
17	K353-060010	deep groove ball bearing ZZ 6001	1	NO.HV20-000001~NO.HV20-000200 K350-060010 deep groove ball bearing 6001	
18	G022-000380	112 color 1219 7.5	1		
19	K354-060010	Deep groove ball bearing UU	1		
20	K207-080233	8.5x2.3 for plane washer screw	1	8.5 x 18 x 2.3	
21	A123-105004	Shaft color	1		
22	K055-040100	+ Upset P3 M4x10	2		
23	R037-002100	Clamp	1		
24	HV2-A009000	Cover	1		
25	HV2-A010000	Gasket	1		
26	R055-000100	M6 grease nipple	1		
27	HV2-A003000	Body	1		
28	K210-050000	Lock washer 2 M5	1		
29	K091-050300	Wing bolt M5x30	1		
30	K081-05012T	Six square hole equipped volts/bolts P2 M5x12	1		
31	K207-050164	5.5x1.6 for plane washer screw	1	5.5 x 12 x 1.6	
32	073-205	Bevel gear R	1		
33	K353-062000	Deep groove ball bearing ZZ 6200	1	NO.HV20-000001~NO.HV20-000200 K350-062000 deep groove ball bearing 6200	
34	K354-062000	Deep groove ball bearing UU	1		
35	K282-030000	C type retaining ring RTW 30	1		
36	G022-000380	Color 1219 7.5	1		
37	HV5-A003000	The left handle	1		
38	008-345	Grip	1		
39	136-103	Steering wheel holding down	1		
40	K054-050250	On + upset P2 M5x25 crankcase	2		
41	HV7-A005000	On crankcase	1		
42	R055-000100	M6 grease nipple	1		
43	K354-006080	Deep groove ball bearing UU 608	1		
44	136-003	Crank gear finishing	1		
45	TE1-A044000	Rod	2		
46	K283-026000	C type retaining ring STW 26	1		
47	K354-060010	Deep groove ball bearing UU	1		
48	HV2-A008000	Pinion 14x17.5	1		
49	K354-006080	Deep groove ball bearing UU 608	2		
50	HV7-A006000	Under crankcase	1		
51	K054-050160	+ Upset P2 M5x16	6		
52	HV7-A008000	Slide board	1		
53	HV7-A009000	Felt	1		
54	008-250	Blade slide washer	3-4	450mm 3 600 size 4	
55	A040-001009	Blade slide bis L=17	3-4	450mm 3 600 size 4	
56	A259-127019	Upper blade 450	1	450mm	
	063-112	Upper blade 600	1	600mm	
57	A259-129019	Lower blade 450	1	450mm	
	A259-128019	Lower blade 600	1	600mm	
58	K031-050161	Sash S machine screw small	1		
59	A259-120009	Presser bar 450	1	450mm	
	A259-119009	Presser bar 600	1	600mm	

Number	Part number	Part name	Quantity	Comment	Price
60	HV7-A007000	Stabilizer	1		
61	K162-050000	Collar nut S M5	1		
62	K054-050160	+ Upset P2 M5x16	3		
63	HV5-A002000	Cap	1		
64	K171-040000	Plate washer nut M4	1		
65	K171-040000	Plate washer nut M4	1		
66	K081-05030T	Six square hole equipped mbolts P2	1		
67	A118-150004	Aluminum R washer	1		
68	A025-009004	Sack metallic parts	1		
69	K015-040300	Pan P1 M4x30	1		
70	A025-009004	Sack metallic parts	1		
71	K015-040300	Pan P1 M4x30	1		
72	K171-040000	Plate washer nut M4	1		
73	HV5-A005000	Steering wheel frame 450mm	1	450mm	
	HV5-A004000	Steering wheel frame 600mm	1	600mm	
74	A035-010009	Cylindrical rubber	1	450mm	
	A035-005009	Cylindrical rubber	1	600mm	
75	K171-040000	Plate washer nut M4	2		
76	HV5-A002000	Cap	1		
77	HV3-A006000	Duct 450mm	1	450mm	
	HV3-A005000	Duct 600mm	1	600mm	
78	A259-124009	The leaf moving aside metallic parts	1		
79	K012-040080	Truss machine screw M4x8	2		
80	HV1-A005000	Bottom frame finishing 450	1	For 450 size	
	HV1-A003000	Bottom frame finishing 600	1	For 600 size	
81	K166-060000	The U nut it is thin M6	3-4	450 size 3 600 size 4	
82	K171-040000	Plate washer nut M4	1		
83	A259-125009	The leaf moving aside metallic parts	1		
84	K012-040080	Truss machine screw M4x8	2		
85	K171-040000	Plate washer nut M4	2		
86	HV1-A004000	Side framework	1		
87	K012-040050	Truss machine screw M4x5	2		
88	008-341A	Sack metallic parts	1		
89	K012-040100	Truss machine screw M4x10	1		
90	HV3-A004000	Duct flange	1		
91	K113-401000	Truss self-tapping 24 x10	3		
92	K112-400800	Truss self-tapping 14 x8	2		
93	008-341A	Sack metallic parts	1		
94	K012-040300	Truss machine screw M4x30	1		
95	K012-040250	Truss machine screw M4x25	1		
96	G028-103603	Blade cover Blue	1	450mm	
	A028-129009	Reciprocating blade cover	1	600mm	
97	R030-002100	Throttle lever	1		
98	A010-204004	Throttle cable	1		
99	A005-076004	Slide switch	1		
100	A052-145004	STOP label	1		
101	136-115	Switch stay	1		
102	K010-050250	Pan machine screw M5x25	1		
103	K210-050000	Lock washer 2 M5	1		
104	K150-050000	Hexagon nut 1 M5	1		
105	G020-000100	Flexible shaft assembly	1	Total length 832mm (the Indian & Sri Lankan	
	G020-000200	Flexible shaft assembly	1	Total length 932mm (the Chinese specification)	
	G020-000300	Flexible shaft assembly	1	Total length 1112mm (the Canadian	
106	HVH-A004000	Wire guide	2-3	Only the Canadian specification 3	
107	R035-001600	Unity band CV-100B	4		
108	008-375	Corrugated tube	1		